

**Anti-Adenosine A3 Receptor Antibody**  
**Rabbit polyclonal antibody to Adenosine A3 Receptor**  
**Catalog # AP60531****Specification**

---

**Anti-Adenosine A3 Receptor Antibody - Product Information**

Application	WB, IF/IC
Primary Accession	<a href="#">P0DMS8</a>
Other Accession	<a href="#">Q61618</a>
Reactivity	Human, Mouse, Rat
Host	Rabbit
Clonality	Polyclonal
Calculated MW	36185

**Anti-Adenosine A3 Receptor Antibody - Additional Information****Gene ID** 140**Other Names**

Adenosine receptor A3

**Target/Specificity**

Recognizes endogenous levels of Adenosine A3 Receptor protein.

**Dilution**

WB~~WB (1/500 - 1/1000), IF/IC (1/100 - 1/500)

IF/IC~~N/A

**Format**

Liquid in 0.42% Potassium phosphate, 0.87% Sodium chloride, pH 7.3, 30% glycerol, and 0.09% (W/V) sodium azide.

**Storage**

Store at -20 °C. Stable for 12 months from date of receipt

**Anti-Adenosine A3 Receptor Antibody - Protein Information****Name** ADORA3 ([HGNC:268](#))**Function**

[Isoform 2]: Receptor for adenosine. The activity of this receptor is mediated by G proteins which inhibits adenylyl cyclase (PubMed:&lt;a href="http://www.uniprot.org/citations/8234299" target="\_blank"&gt;8234299&lt;/a&gt;).

**Cellular Location**

Cell membrane {ECO:0000250|UniProtKB:Q28309}; Multi-pass membrane protein

**Tissue Location**

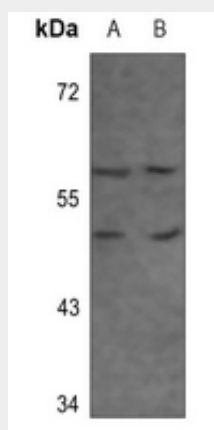
Expressed in the lung and bone. Expressed at lower levels in osteosarcoma tissues (at protein level)

### Anti-Adenosine A3 Receptor Antibody - Protocols

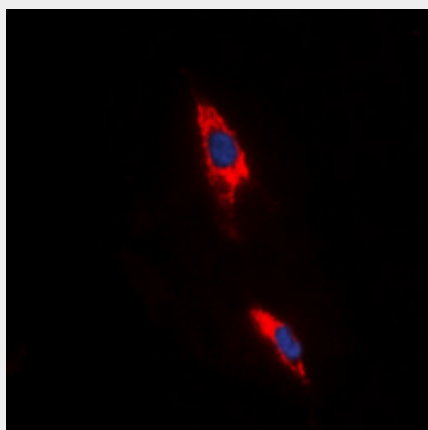
Provided below are standard protocols that you may find useful for product applications.

- [Western Blot](#)
- [Blocking Peptides](#)
- [Dot Blot](#)
- [Immunohistochemistry](#)
- [Immunofluorescence](#)
- [Immunoprecipitation](#)
- [Flow Cytometry](#)
- [Cell Culture](#)

### Anti-Adenosine A3 Receptor Antibody - Images



Western blot analysis of Adenosine A3 Receptor expression in MCF7 (A), H1792 (B) whole cell lysates.



Immunofluorescent analysis of Adenosine A3 Receptor staining in HeLa cells. Formalin-fixed cells were permeabilized with 0.1% Triton X-100 in TBS for 5-10 minutes and blocked with 3% BSA-PBS for 30 minutes at room temperature. Cells were probed with the primary antibody in 3% BSA-PBS and incubated overnight at 4 °C in a humidified chamber. Cells were washed with PBST and incubated with a DyLight 594-conjugated secondary antibody (red) in PBS at room temperature in

the dark. DAPI was used to stain the cell nuclei (blue).

#### **Anti-Adenosine A3 Receptor Antibody - Background**

KLH-conjugated synthetic peptide encompassing a sequence within the C-term region of human Adenosine A3 Receptor. The exact sequence is proprietary.